

Control Orbits Company

Company Profile



Your Trusted Supplier / Integrator / Contractor for Smart Buildings





Control Orbits Co. provides total solution from design, installation, testing, commissioning to maintenance and operation of full spectrum of building services works, including: HVAC Control Systems, Building Energy Management Systems, Integration Systems, Metering Solutions, Security Systems, Lighting Controls, and Service & Maintenance. We offer a wide range of intelligent and green building solutions including:

✓ **Automation & control solutions**

HVAC and Building Management Systems
Industrial Control and Automation
Hotel Guestroom Management
Lighting Control systems
Home Automation
INTEGRATION
Machine Automation

✓ **Life Safety, and Integrated Security**

Video Surveillance
Access Control and Security Management
Fire & Life Safety
Integrated Security
Perimeter Detection
Automated Gates/ Turnstiles
Public Address & Voice Alarm

✓ **Trading**

HVAC Field Devices
Stand-alone controllers
VFD's & Soft Starters
Industrial Instruments
LV controls materials
PLC's & HMI's
Drives & motors

Control Orbits Company (COC)

Tel: +966 11 216 6616

F ax: +966 11 216 6606

www.controlorbits.com

P.O. Box 366226 Riyadh 11393 KSA

ayman.abujajeh@contolorbits.com

Mobile: +966551912710





Contents

Introduction	3
Who we are	3
Our vision	3
Our Mission	3
Our Value Propositions:	4
Our Solutions/markets.....	5
HVAC and Building Management Systems	6
Industrial Control and Automation	7
Hotel Guestroom Management.....	8
Lighting Control System	9
Fire Alarm System	10
Services	11
Trading	12
Our Partners & Product Lines	13
TREND HVAC & Building Management Systems Profile:	15
SIEMENS industrial automation and driver technology products Profile	17
INNCOM Guestroom Management System Profile	19
Ex-OR Lighting Control System Profile	21
Honeywell Security System Profile	23
Wonderware Profile.....	25
Gent Fire alarm system Profile	27
Our expertise	29
Industrial Workshop _KKIA	30
Hail & Jouf DRPC substation:	31
BMD1 Expansion CPP-2:.....	32
Al Baha University:.....	33
Najran SCADA:.....	34
Contact information:.....	35
Administrative documents/ GOVERNMENT CERTIFICATIONS.	36
Administrative documents/ GOVERNMENT CERTIFICATIONS.	37



Introduction

Who we are

Control Orbits is a control and security system integrator, offering a complete range of building automation solutions, industrial automation solutions, physical security solutions, and open systems technologies and services, including: design, build, installation, and maintenance. Our turnkey solutions not only save customers time, energy, and costs, but also increase overall project quality control.



Control Orbits is committed to providing its customers with the latest technology in integrated building and security management systems, offering a graphical user interface (GUI) that centralizes the command and control of all building automation and security systems.

Control Orbits is independent of any manufacturer; allows us to select the most suitable products to achieve the unique requirements of every customer and project, all the systems we offer support IP connectivity and industry standard open protocols to ensure the systems we install can be upgraded and expanded in the future throughout the life cycle of the building.

Control Orbits aims to achieve 100% Customer satisfaction; we study carefully customers unique requirements and suggest options and solutions to customer's needs; upon agreeing on plan we finally we do the job at the right time with the right people and in the right way exceeding expectations. This is why we build long-term relationships with our clients, and this is why with Control Orbits, every customer is repeated customer.

Control Orbits hires individuals who are highly trained experts in their fields. This allows us to maintain our good name in the market while allowing our customers to relax knowing that they've chosen the right company for the job.

Our vision

To maintain high levels of customer satisfaction by providing professional and expert advice, superior support, and quality services that exceeds the expectations of our esteemed customers.

Our Mission

To build long term relationships with our customers and clients and provide exceptional customer services.



Our Value Propositions:

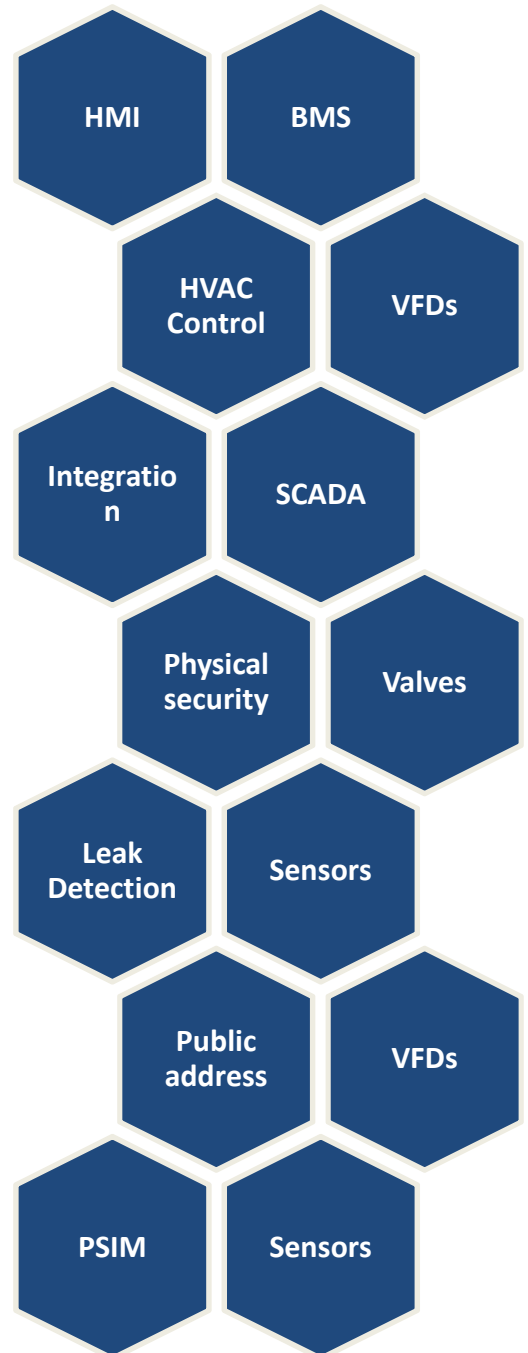
- Control Orbits is a business built on LONG-TERM RELATIONSHIPS and trust; we believe in treating our customers with respect, we integrate honesty, integrity and business ethics into all aspects of our business functioning.
- We invest in our EMPLOYEES KNOW HOW to provide our customers with Qualified & Experienced Field Support Technicians/ Engineers. We believe in promoting a learning environment that will support the growth of our company.
- We aim to EXCEED OUR CLIENTS' EXPECTATIONS at all times, on every aspect of every project.
- You are FREE TO CHOOSE the right controls & security manufacturer for your application. We work to be the provider of choice. Our customers are open to unlimited possibilities.
- A ONE-STOP-SHOP for building management systems, industrial automation, physical security, Lighting controls, fire alarm...
- APPLICATION EXPERTS in Datacenters, Command Centers, HVAC control, and Integration, enabling us to offer customized solutions for your business needs.
- Open solutions: allowing increased flexibility and greater freedom of choice.
- Future-proof systems integrator: our customer can ensure that they can expand/ upgrade/ and choose from a large variety of vendors, no matter how the market develops
- Offering true AFTER-SALES SERVICES and remote Monitoring/Management for unmanned sites.





Our Solutions/markets

- Automation & control solutions
 - HVAC and BMS
 - Industrial Control and Automation
 - Hotel Guestroom Management
 - Lighting Control systems
 - Home Automation
 - INTEGRATION AND PSIM
 - Machine Automation
 - Power Management
- Fire & Life Safety, and Integrated Security
 - Video Surveillance
 - Access Control and Security Management
 - Fire & Life Safety
 - Integrated Security
 - Perimeter Detection
 - Automated Gates/ Turnstiles
 - Public Address & Voice Alarm
- Trading
 - HVAC Field Devices
 - Stand-alone controllers
 - VFD's & Soft Starters
 - Industrial Instruments
 - LV controls materials
 - PLC's & HMI's
 - Drives & motors
- Services:
 - Free Assessment and Consultation
 - Annual maintenance
 - Preventive maintenance
 - Integration
 - Engineering, and Software Development
 - Remote Monitoring/Management for unmanned sites.





Automation and control solutions:

HVAC and Building Management Systems

Building Energy Management Systems (or BEMS) are computer-based systems that help to manage, control and monitor building technical services (HVAC, lighting etc.) and the energy consumption of devices used by the building. They provide the information and the tools that building managers need both to understand the energy usage of their buildings and to control and improve their buildings' energy performance.

Our BMS experience is broad and crosses every segment of the building industry offering a variety of open-protocol and leading-edge smart building technologies designed to adapt to your needs far into the future.



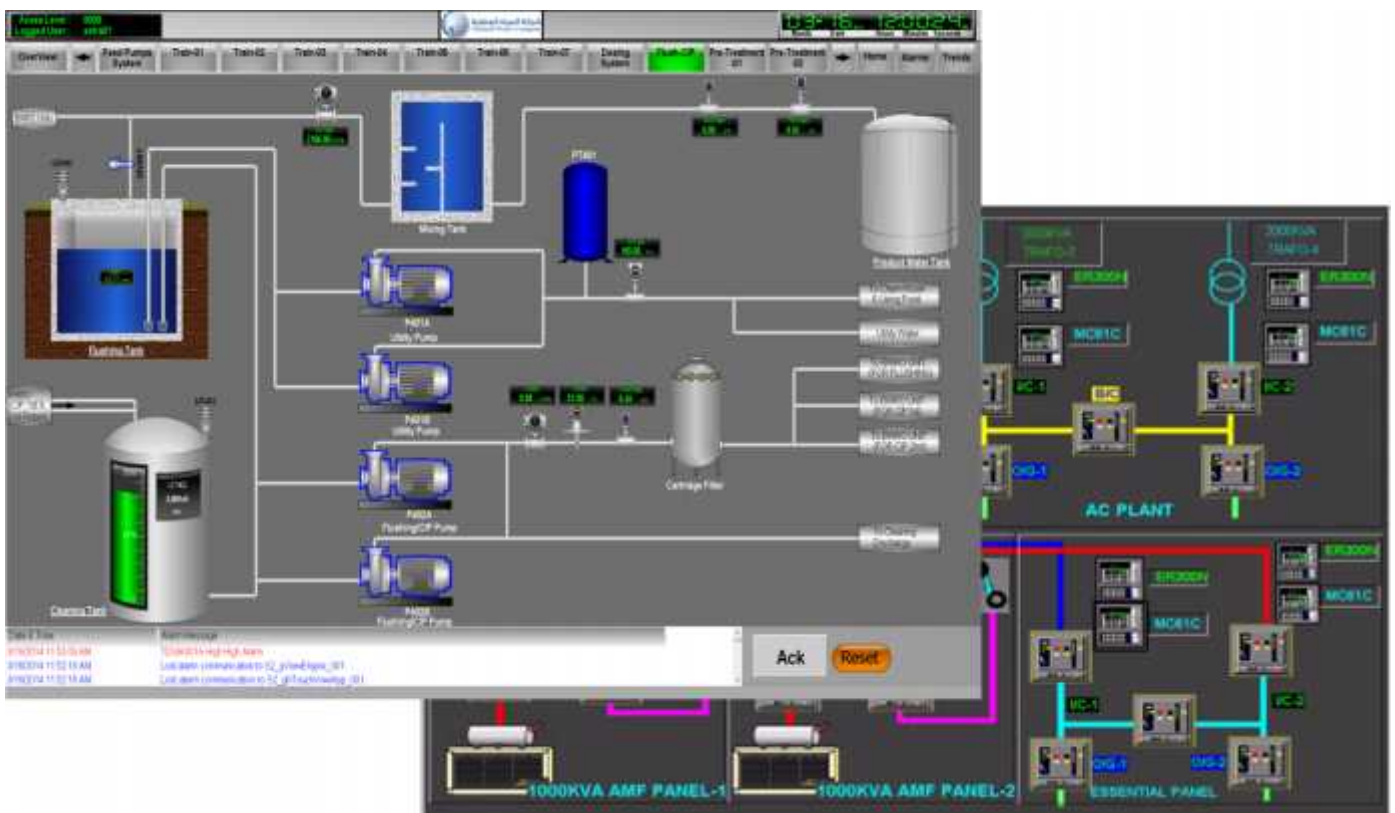


Automation and control solutions:

Industrial Control and Automation

Redundancy (or fault tolerance) is critical to ensure continued system operation despite unanticipated failures. Supervisory control and data acquisition (SCADA) systems are widely used in Mission-critical installations and factories across the world; the advanced high-level control and monitoring features they provide are fundamental to improving plant efficiency and productivity.

Whatever type of disaster recovery is planned for, we work to greatly reduce lost data and downtime by planning the proper system design, and by choosing a fit redundancy level for your application. We are able to adapt standard systems to customer-specific requirements rapidly and without a great deal of





Automation and control solutions:

Hotel Guestroom Management

Guest Room Management Systems (or GRMS) Enhanced experience for your guests and Improved the efficiency for your hotel. GRMS links energy management components with the property management system (PMS) and automated door locks to ensure guests are always comfortable. So when a guest checks in, the PMS signals the GRMS to automatically activate temperature controls to a comfortable set point. Smart GRMS will also measure if the room is temporarily unoccupied and automatically drops back the thermostat to an energy saving temperature setting. You can absolutely track in real time what goes on with the HVAC in every room.

Our GRMS solutions assure elegant style combinations, and guarantee that each guest experiences seamless environmental comfort from check-in to departure. Elegant style combinations





Automation and control solutions:

Lighting Control System

Businesses, schools and government facilities spend a fortune each month to light unoccupied rooms, offices, warehouses and more. Lighting Controls offer smart scheduling, presence detection and photocells to ensure lights aren't left burning in vacant areas and that lights are off in areas where there's already plenty of natural light. Our solutions maximize the efficiency of lighting systems, without compromising the comfort and performance of the building.

We offer flexible and reliable lighting control solutions as a standalone solution or as part of an overall integrated energy management.





Fire & Life Safety:

Fire Alarm System

Businesses, schools and government facilities spend a fortune each month to light unoccupied rooms, offices, warehouses and more. Lighting Controls offer smart scheduling, presence detection and photocells to ensure lights aren't left burning in vacant areas and that lights are off in areas where there's already plenty of natural light. Our solutions maximize the efficiency of lighting systems, without compromising the comfort and performance of the building.

We offer intelligent fire alarm solutions to help you decrease response time reduce risk and validate for regulatory compliance.



Services

Our clients rely on us to provide them with first-class services across a number of disciplines and activities, from problem root cause analysis, to systems consultancy and design, to 24 x 7 x 365 annual maintenance contracts.

Whether you simply need to identify a reliable resource for fast and accurate repairs, or you want to continually optimize the performance of your building, providing a detailed list of services your system may require, from application programming and software upgrades to component replacement and staff support. Our modular and flexible contracts cover your facility's control, security, fire and life safety, and building automation systems.

Our services include:

- ✓ *Free Assessment and Consultation*
- ✓ *Annual maintenance*
- ✓ *Remote Monitoring/Management for unmanned sites.*
- ✓ *Preventive maintenance*





Our Partners & Product Lines

We choose our key strategic suppliers carefully, this is a short list of the brands we represent:



Trend Control Systems Ltd is a United Kingdom based company, headquartered in Horsham, UK. Trend Controls is an independent entity of the Automation and Control Solutions business of Honeywell. Trend's products include controllers, supervisor software, valves and actuators, and sensors.



SIMATIC by Siemens is one of the world's leading industrial automation systems. It includes a range of industrial automation products designed to accommodate a large variety of tasks. Flexible and cost-effective, the SIMATIC system is ideally suited to manage the ever-growing demands the manufacturing and process industry requires of today's machines and systems.



INNCOM by Honeywell is a leading supplier of energy management systems for hotels, with Integrated Room Automation System and energy management solutions installed in more than 1 million hotel rooms worldwide with most major hotel brands including: Fairmont, Four Seasons, Gaylord, Hard Rock, Hilton, Hyatt, InterContinental, Jumeirah, Mandarin Oriental, Marriott, Radisson, and many other brands & properties.



Ex-Or by Honeywell is a market leading supplier of high performance lighting control systems. We make light work for energy efficiency, comfort and productivity. We offer a 5 year back to base Warranty on our LightSpot and MLS Sensors, Connect and Connect Digital Lighting Control Modules, as well as MLS Lighting Control Systems.



Honeywell security has the commitment, technology, and the resources to provide the best video surveillance solutions in the industry today. We offer IP and analog video solutions including cameras, domes, lenses, keyboards, DVRs, HVRs, NVRs, quads, multiplexers and more.



Gent by Honeywell fire detection systems have been developed to the highest possible standards to deliver the most advanced fire detection and alarm systems available in the market today. We have a broad range of Analogue Addressable and Conventional fire detection systems. In addition to this we have built up our expertise in voice alarm systems and have a range of systems to suit to most applications.



Schneider offers world-class energy management systems to security management, energy and carbon dashboards and active energy controls for buildings. Eco-Struture integrated architecture integrates all five key domains of a building: power, IT room, process, building, and security management systems.



Gunnebo is a global leader in security products, services and solutions with an offering covering cash handling, safes and vaults, entrance security and electronic security for banks, retail, CIT, mass transit, public & commercial buildings and industrial & high-risk sites.



Wonderware is the global leading brand of industrial software including Human Machine Interface (HMI), SCADA, MES, real-time Operations Management and Production Information Management software. Wonderware solutions enable production and industrial operations to synchronize with business objectives to achieve speed, flexibility and sustained profitability.



Ackermann by Honeywell offers a full range of suitable products for all types of facilities - from the classic opto-acoustic call system to highly integrated system solutions with digital voice transmission and multimedia



VARIODYN® D1 by Honeywell is an extensive product portfolio available for the most diverse areas of application. It adopts modular decentralized management mode based on the Ethernet, the system can achieve linkage with airport information systems, BMS, fire panel to automatically broadcast accurate flight information and voice alarm, enabling automated and integrated management.



TREND HVAC & Building Management Systems Profile:



TREND

Trend is one of the leading Building Management Systems manufacturers serving worldwide HVAC markets. Through close control and monitoring of heating, ventilation, air conditioning and other building services, Trend systems are able to minimize energy consumption and maintain consistently comfortable conditions – as well as bringing other key benefits such as lower plant maintenance costs. Systems are to be found in virtually every type of non-residential building, from schools, hospitals and leisure centers to office blocks, shops and factories. Suitable for the largest building complexes and multi-site applications, they are still cost-effective in even very small premises.



Reasons to use Trend solution:

Flexible Configuration

With the **widest possible combination of input/output (I/O) configurations**, Trend's IQ®4 Internet enabled controllers utilize Ethernet and TCP/IP networking technologies, and utilize the BACnet protocol over IP. The ability to upgrade between point variants provides increased flexibility, and enhanced processing performance enables more complex applications to be controlled.

Trend's new universal input and analogue output module concept, with 8UIO and 4UIO channel variants, is a significant feature. This allows every channel to be configured as a digital input, thermistor input, current input, voltage input or voltage output. Once again, this versatility will deliver significant savings on installation and equipment costs, as well as simplifying the potential maintenance stock.

Trend IQ®4E

Trend's IQ®4E is the latest addition to the company's industry leading range of control devices.

Available in 16, 32, 64, 96, 128, 160 and 192-point variants; applications of all sizes can benefit from its best in class technology, while the ability to upgrade between the point variants provides increased flexibility.

Superior processing performance enables even the most complex HVAC applications to be controlled and the IQ®4E also has improved I/O bus capabilities, with an available length of up to 300m and the potential for 30 I/O modules to be configured.

Backwards compatibility

As with all Trend products, backwards compatibility is designed in from the outset. Able to communicate with any IQ®1, IQ®2 or IQ®3 controller, the IQ®4 modules are also interchangeable for additional future proofing, scalability and system longevity – all of which can protect the financial investment in a BEMS.

Open Protocol

Trend TONN is Supplied with drivers for BACnet IP, BACnet MSTP, EIB/KNX IP, LONFTT, LON IP, MODBUSRTU Master, MODBUSRTU Slave, MODBUSTCP Master, MODBUSTCP Slave, MBus Serial, MBus IP, oBIX, and SNMP systems. Additional optional drivers available: Flex over RS232 or RS485, Micros Fidelio hotel room booking system (IP), Global Cache, Horstmann serial, Helvar serial, American Automatrix PHP over RS232 or RS485 and American Automatrix PUP over RS232 or RS485.



Reduce panel sizes



Flexible configuration



Control large estates



Distributed I/O control



Lifetime savings



IQ4E Better 4 functionality and performance



SIEMENS industrial automation and driver technology products Profile



SIEMENS

Totally Integrated Automation, industrial automation from Siemens, is the name given to efficient interoperability of all automation components. The open system architecture covers the entire production process and is based on the consistent presence of shared characteristics: consistent data management, global standards, and uniform hardware and software interfaces. These shared characteristics minimize engineering time. The result: lower costs, reduced time to market, and greater flexibility.



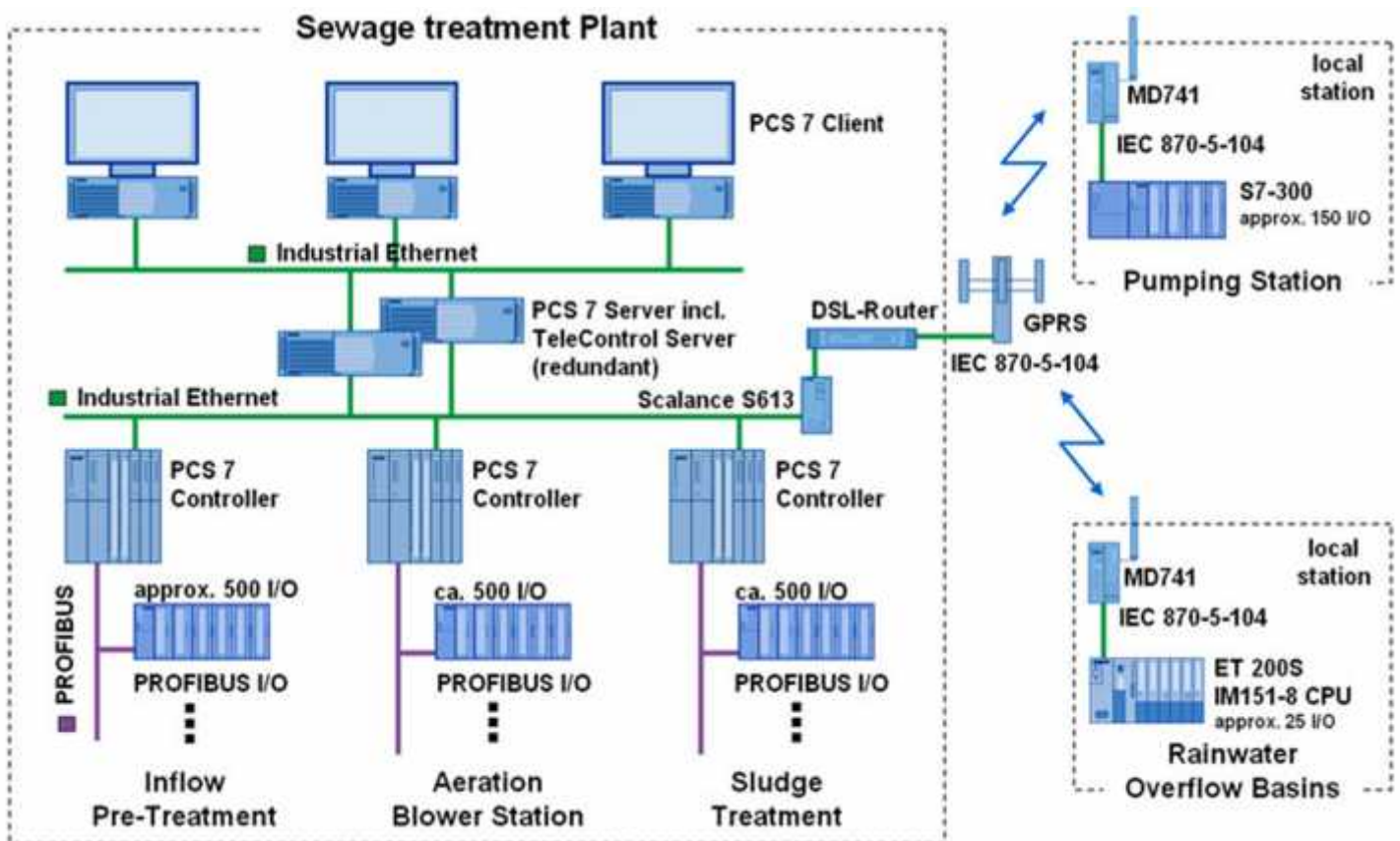
Reasons to use Siemens solutions:

Practical

SIMATIC WinCC® is a scalable process visualization system (SCADA) that is graduated by price and performance, with efficient functions for controlling automated processes.

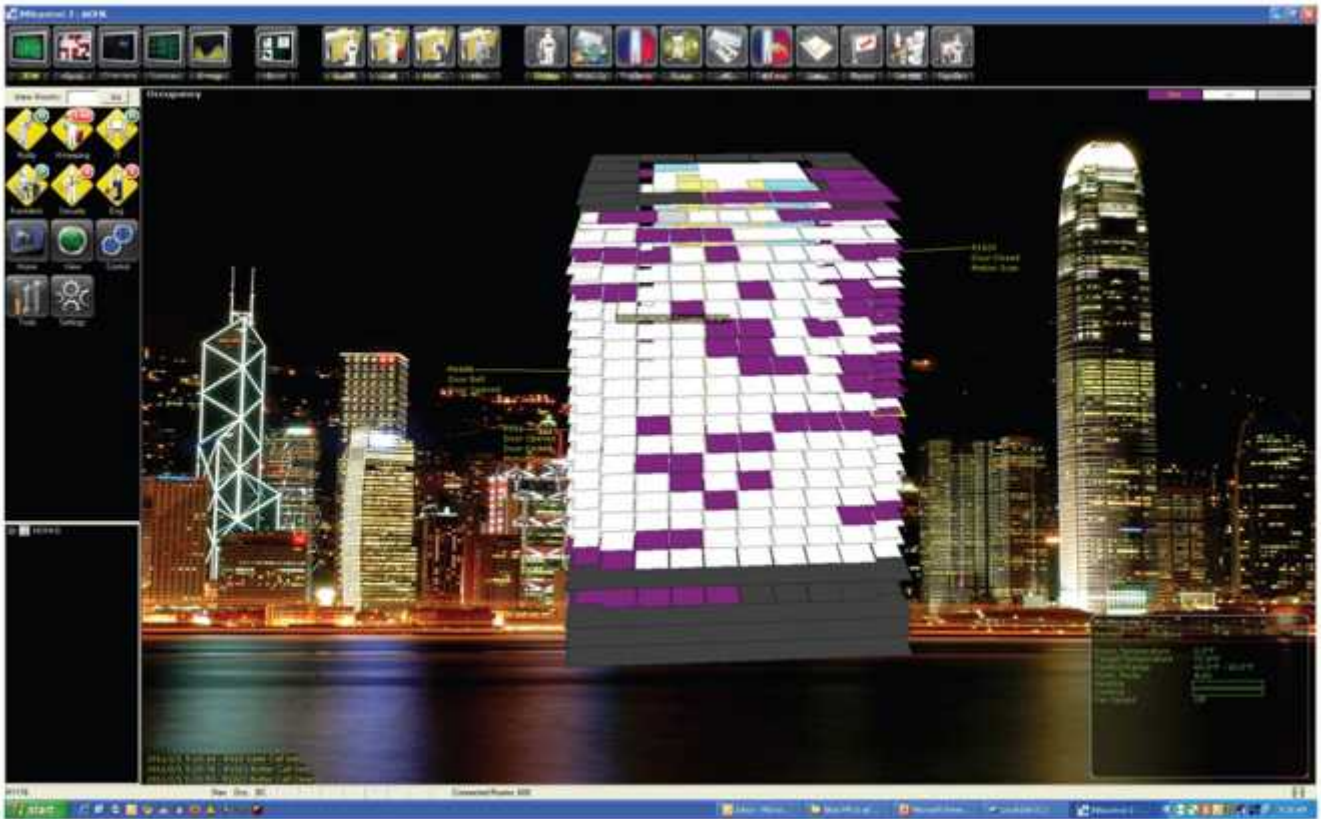
With SIMATIC WinCC, “perfect process visualization“ stands for complete operating and monitoring functionality under Windows for all industry segments – ranging from simple single-user systems through to distributed multi-user systems with redundant servers and the structure of a cross-site solution including Web clients.

One of the special features of WinCC is its total openness. It can be readily used in combination with standard and user programs, creating HMI solutions which precisely meet practical requirement





INNCOM Guestroom Management System Profile



INNCOM

Global Leader in Integrated Room Automation Systems

INNCOM, more than two decades. So we've developed quite an extensive knowledge base over the years.

INNCOM offers a broad range of innovative, intelligent devices and robust integrated systems. Mixing and matching INNCOM by Honeywell technologies delivers fully integrated applications for temperature and humidity control, energy management, lighting control, drupe operation, on-line electronic lock regulation, guest (end-user) interfaces and operating enhancements for housekeeping, security, operations and management staff.



Reasons to use INNCOM solutions:

Enhanced security, satisfaction, and capabilities

INNCOM enhance property security and guest satisfaction while increasing staff capabilities, it enables you to:

- ✓ remotely re-assign rooms
- ✓ remotely configure suites
- ✓ provide VIP front deskless check-in
- ✓ remotely extend a guest's check-out time
- ✓ instantly know when a door is forced open
- ✓ universally cancel and/or re-issue a staff key card
- ✓ automatically cancel a guest keycard upon check-out
- ✓ verify lock functioning before issuing a keycard at check-in
- ✓ have daily lock time synchronization and automatic daylight savings changes
- ✓ save on labor, batteries and dead lock occurrences with battery condition reporting

Flexible network.

INNCOM networks can be as flexible as they need to be. Whether you prefer a wired or wireless infrastructure, we have the capability to accommodate your requirements. We can deploy our platform on existing telephone cabling, CAT5 or CAT6 or even wireless networks. This flexibility enables INNCOM to install its systems cost effectively in both new construction as well as in operating properties with minimal disruption.

Benefits

- ✓ Helps reduce compensation paid for satisfaction guarantees by alerting staff to HVAC problems.
- ✓ Helps minimize revenue loss from rooms out of service due to HVAC problems.
- ✓ Helps prevent lost rental revenue with audit trail of rooms that are occupied for extended periods without being rented.
- ✓ Ensures peak performance and operation and helps avoid catastrophic equipment damage such as frozen compressors.
- ✓ Automatic monitoring and reporting of alarms and events optimizes the investment made in a room automation system by ensuring peak performance.
- ✓ Improved maintenance scheduling, prolonging equipment life and avoiding premature failures.
- ✓ Easily displays energy savings month-by-month.





Ex-OR Lighting Control System Profile



Ex-Or's excellence in design and manufacturing provides robust and reliable products which are backed up with a five year warranty. Ex-Or lighting controls switch lights off when no one's there, and dim or switch them off when there's enough natural light. So they help you save on your energy costs – sometimes as much as 70%, year after year



Reasons to use Ex-Or solution:

Part of Honeywell

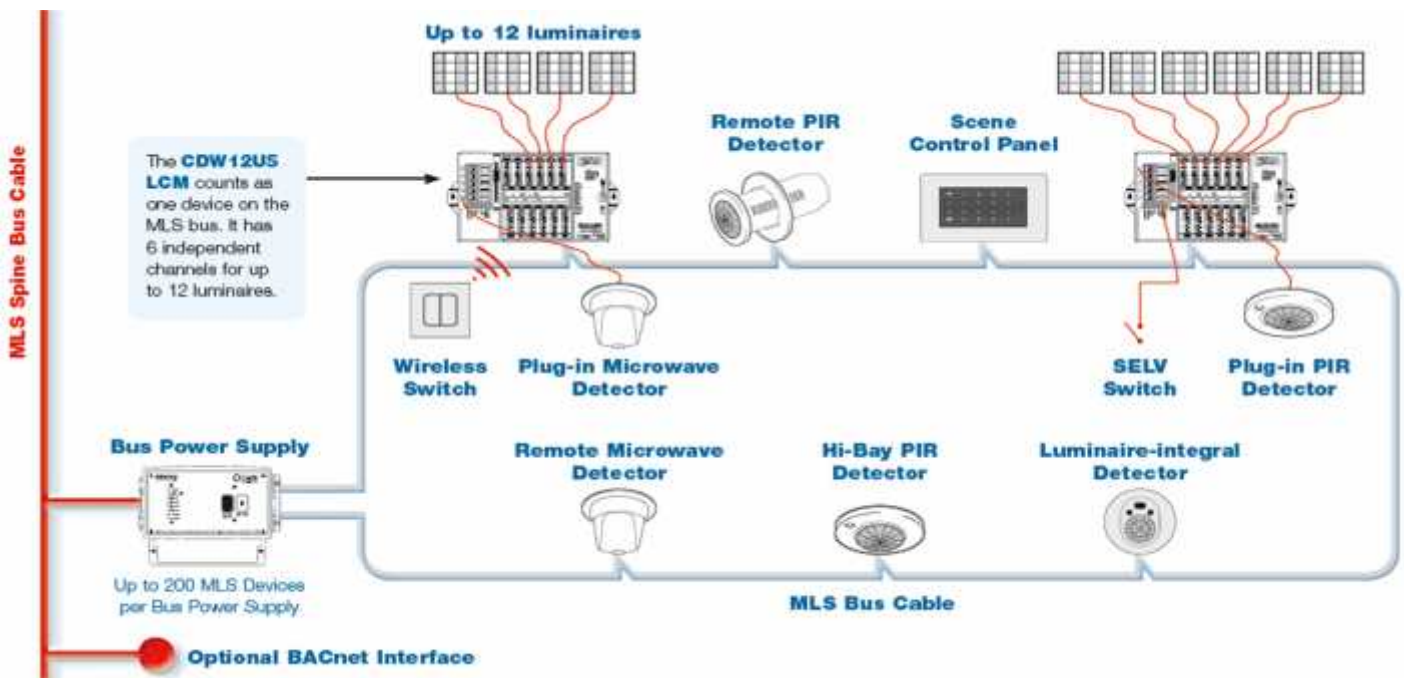
A part of Honeywell's energy efficiency portfolio of products for the built environment: Honeywell's range of products is designed to work together – so you can have confidence when you use lighting, HVAC and other Honeywell products and systems. For example, sensors that control lighting could also help to manage air conditioning and heating systems when linked to a building management system

Comprehensive Range Extended warranty:

Standalone, Wired Controls Systems, and wireless offers with a 5 year back to base Warranty on our LightSpot and MLS Sensors, Connect and Connect Digital Lighting Control Modules, as well as MLS Lighting Control Systems

One Box, One Solution

- ✓ Upgradable to dimming, MLS Bus and motion control without unit replacement
- ✓ Multiple dimming options
 - DSI / DALI / 1-10V
- ✓ Multiple detector options
 - PIR 360°
 - Directional Microwave 90°
 - Microwave 360°
 - Integral PIR 360°
- ✓ 6A Load capacity
- ✓ 6A Switching capacity
- ✓ Emergency fittings / maintained live output.
- ✓ Flexible
- ✓ Plug and play





Honeywell Security System Profile



Honeywell

Integrated Security

Designed to work together seamlessly, Honeywell Security products provide you with the technology you need to deliver sophisticated security solutions - from the simplest to the most challenging.

State-of-the-art access control software integrates the most advanced security technologies with innovative networking capabilities to bring you full-featured security solutions serving any size facility.



Reasons to use Honeywell security solution:

Honeywell Security Systems

Diverse Range of Products

Video Solutions
 Explosion Proof Bullet Camera HD-DVRs IP Cam - H264 DVRs (Embedded and PC-Based), IP Servers and Encoders/Decoders

Access & Intrusions
 Galaxy Intruder NetAXIS-123 ProPro K

Enterprise System

End-to-end Solutions for Maximum Security!

Intelligent Analytics

Detects, classifies, and tracks multiple objects simultaneously

- ✓ Not affected by changes in illumination, shadows, or weather conditions
- ✓ It ignores background environments: rain, snow, waves, trees, birds

Detects Events

- ✓ Motion: move in wrong direction, enter/exit, running, loitering
- ✓ People interaction: people merge, people talked
- ✓ Traffic rules: illegal parking, illegal U-turn, pulled off road
- ✓ Object interaction: object left unattended, object removed
- ✓ Video events: video lost/restored, camera blocked or blurred.

User Assigned Alarm Levels

- ✓ Sort alarms/events by significance
- ✓ Raise real-time alarms

Fast Search and Retrieval

- ✓ By object, by event, by camera, by date and/or time and trajectory

Pro-Watch Platform Features

- ✓ True Client – Server architecture, Distributed System Architecture
- ✓ Windows® Explorer Look and Dynamic Graphic Map
- ✓ Database Partitioning
- ✓ Unlimited Readers, Online Cards
- ✓ Unlimited User-definable Fields for cardholder
- ✓ Unlimited access level - Customized / Timed access level for cardholder
- ✓ Various Reports
- ✓ Guard Tour, Mustering
- ✓ Local and Global anti-passback, Forgiveness
- ✓ Two Person Rule
- ✓ First card unlock
- ✓ Supports wide range of Panels

Fusion NVR – Features

- ✓ IP recording up to 32 channels
- ✓ Megapixel recording
- ✓ Local live viewing
- ✓ Internal storage capacity from 500 GB to 12 TB
- ✓ External storage options from 1 TB to 48 TB
- ✓ Up to 16 audio channels (with supported IP cameras)
- ✓ 10/100/1000 Gigabit Network standard
- ✓ Remote access software: maintain/monitor multiple DVRs across multiple sites.
- ✓ Integrated with a wide variety of 3rd party cameras:- increases customer choice and expands market acceptance
- ✓ POS Integration





Wonderware Profile



Organizations from many different industries choose Wonderware Human Machine Interface (HMI) and Supervisory Control solutions because they satisfy the concerns of plant management, engineering, production and IT staff alike. Wonderware brings an empowering simplicity to managing plant operations through legendary ease of use, unparalleled scalability, matchless capabilities and standards-based, secure integration



Reasons to use Wonderware solution:



Wonderware
**Device
Integration**

Key Benefits

- ✓ Truly legendary ease-of-use enabling developers and operators to quickly and easily be more productive
- ✓ Unequaled device integration and connectivity to virtually every device and system
- ✓ Stunning graphic visual representation and interaction with your operation brings the right information to the right people at the right time
- ✓ History of uninterrupted software version migration path that means your HMI applications investment is protected
- ✓ Allows communications and device naming to be different for the same application, allowing re-use on any machine
- ✓ Support for OPC standards



CONNECTIVITY

Wonderware has an impressive library of Device Integration solutions for interfacing to a broad range of control and sensor devices on the plant floor... and beyond. More than 800 servers are currently available from Wonderware and more than 100 partner companies, providing connections to PLCs, RTUs, DCSs, flow controllers, loop controllers, scales, gauges, bar code readers and other hardware devices from the biggest names industrial automation — including Allen-Bradley, Siemens, Modicon and many others. Wonderware constantly adds new and enhanced Device Integration products to our server library.

Key Capabilities

- ✓ Resolution independent graphics and intelligent symbols that visually bring your facility to life right on your computer screen
- ✓ Sophisticated scripting to extend and customize applications for your specific needs
- ✓ Real-time distributed Alarming with historical views for analysis
- ✓ Built-in, real-time and historical trending
- ✓ Microsoft ActiveX controls and .NET controls integration
- ✓ Extensible library of over 500 pre-designed 'intelligent' and customizable graphic and object symbols
- ✓ Create one application and have it automatically bind to PLC/DCS/RTU addresses at run-time
- ✓ Create templates that can be used with any manufacturer of PLC/DCS/RTU with different naming conventions for addresses
- ✓ Create common SCADA and HMI Applications for different PLC/DCS/RTU types
- ✓ Support for OPC standards



Gent Fire alarm system Profile



GENT

by Honeywell

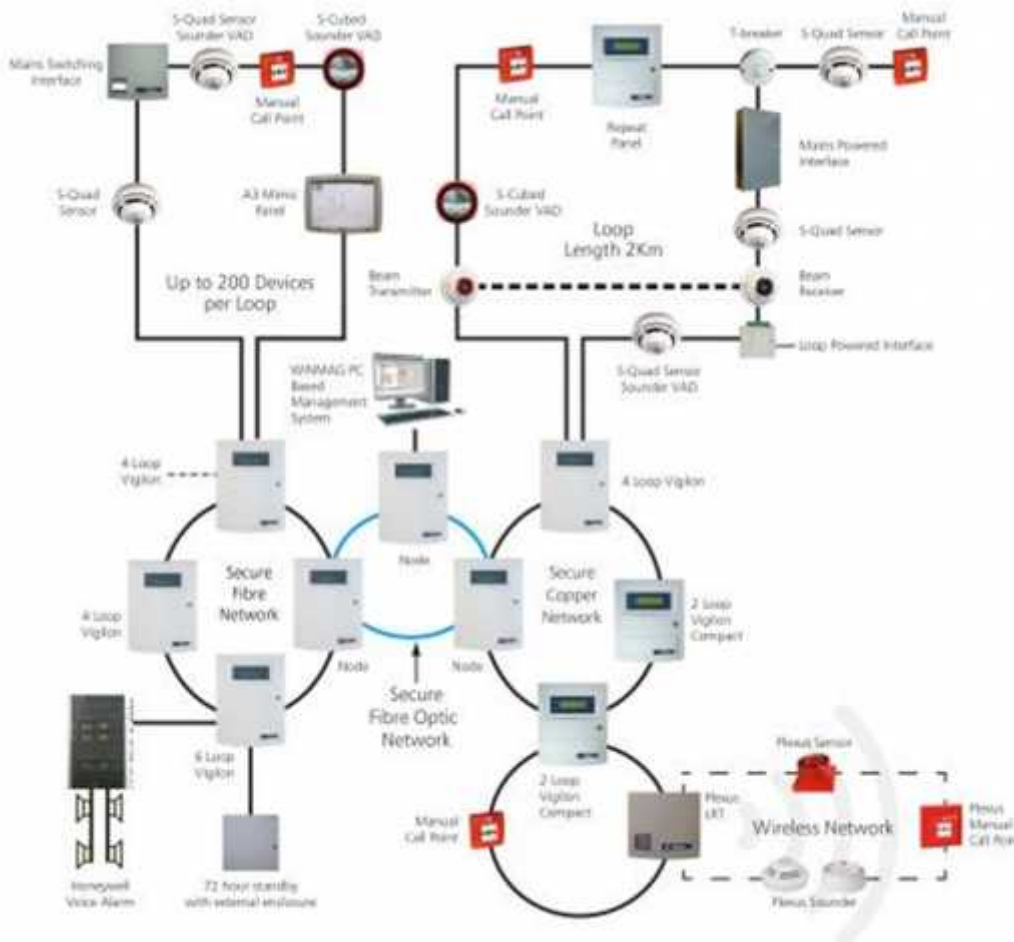
Gent by Honeywell fire detection systems have been developed to the highest possible standards to deliver the most advanced fire detection and alarm systems available in the market today. As market leader, we have a broad range of Analogue Addressable and Conventional fire detection systems. In addition to this we have built up our expertise in voice alarm systems and have a range of systems to suit to most applications.



Reasons to use Gent solutions:

Advanced Vigilon Loop Card:

The new Loop Card is designed to fully comply with EN54-23 and is available on EN54 versions of the Vigilon and Vigilon Compact systems. The increased power allows for up to 100 EN54-23 sensor-sounder-strobes on a 2km loop, managing up to 200 devices in total. It also supports a PC based diagnostic tool to ensure optimum system integrity



Analogue Addressable (1-6 Loop)

Gent by Honeywell's Vigilon system is the most comprehensive life safety system available in the market today. The combination of the powerful software in the control panel and the intelligent loop powered devices delivers a flexible, easy to use system for all types of buildings. The Vigilon system offers a complete range of control panels that can be installed as standalone panels from 1 to 6 loops or as part of multi-panel networks. A system that can meet the needs of a building today and in the future.

Intelligent devices

All devices are powered by the loop, delivering a flexible, streamlined system in any type of building. Requiring just a single two-core cable to connect the loop, every device includes an integral short circuit isolator to reduce installation cost and increase system integrity.

Aspirating Smoke Detection



Honeywell's range of Aspirating Smoke Detection, also known as Air Sampling Detection (ASD) systems can detect fires at a very early stage, often before visible smoldering takes place, before an open fire occurs and before intense smoke develops. The FAAST device range is designed to protect people and assets in even the most challenging environments where standard detection methods fail or are prone to false alarm, or in areas which may not previously have been protected



Our expertise

Short list of sectors/ Our Happy Clients/case studies/ training certificates...etc.





Industrial Workshop _KKIA

Client: Jabria Ind. Company

End-user: KACST

Project description: Building management system (BMS)

Scope of Work:

Control Orbits scope of work is to control and monitor the HVAC work including: CHILLERS, CHILLED WATER PUMPS WITH VFD's, AHUs, PACUs, and other equipment, the total DDC points exceed 1300. Beside the IO points our scope included the Integration with TRAIN chillers through bacnet/MSTP.

Our scope also included the supply of Form-3b MCC-DDC panels including the VFDs and soft starters for ex- fans and compressors. All panels had Trend's Iqview 8 with graphics for local control.



Hail & Jouf DRPC substation:

Client: Ramz for con.
End-user: Saudi Electricity Company
Project description: HVAC control system

Scope of Work:

The scope of work included the supply of stand-alone HVAC Control Panels as per SEC specifications and requirements. The control strategy of DX package units is based on Duty/Standby basis, due to the critical application of controlling the Substation temperature & humidity.

The project included the several Portable Operator Terminal (POT) is provided for local control & monitor.

The DDCs included Fire alarm interface to shut down all the HVAC units.





BMD1 Expansion CPP-2:

Client: OMEGA Company

End-user: Al Marai

Project description: Building management system (BMS)

Scope of Work:

Our scope also included the supply of Form-3b MCC-DDC panels including the VFDs and soft starters for ex- fans and compressors, our controllers are connected to Al Marai IT Infrastructure and integrated with the exiting BMS. All panels had Trend's Iqview 8 with graphics for local control.

Beside the IO points our scope included the Integration with TRAIN chillers through bacnet/MSTP.





Al Baha University:

Client: Al Arrab Company.

End-user: Ministry of Higher education.

Project description: Building management system (BMS)

Scope of Work:

We have been promoted by the university management to supervise the BMS work of other BMS integrators in the university and make sure that they comply with the specification and implementing optimum control strategies.





Najran SCADA:

Client: Basis perfect for trade, DGS Company

End-user: water authority of Najran

Project description: SCADA

Scope of Work:

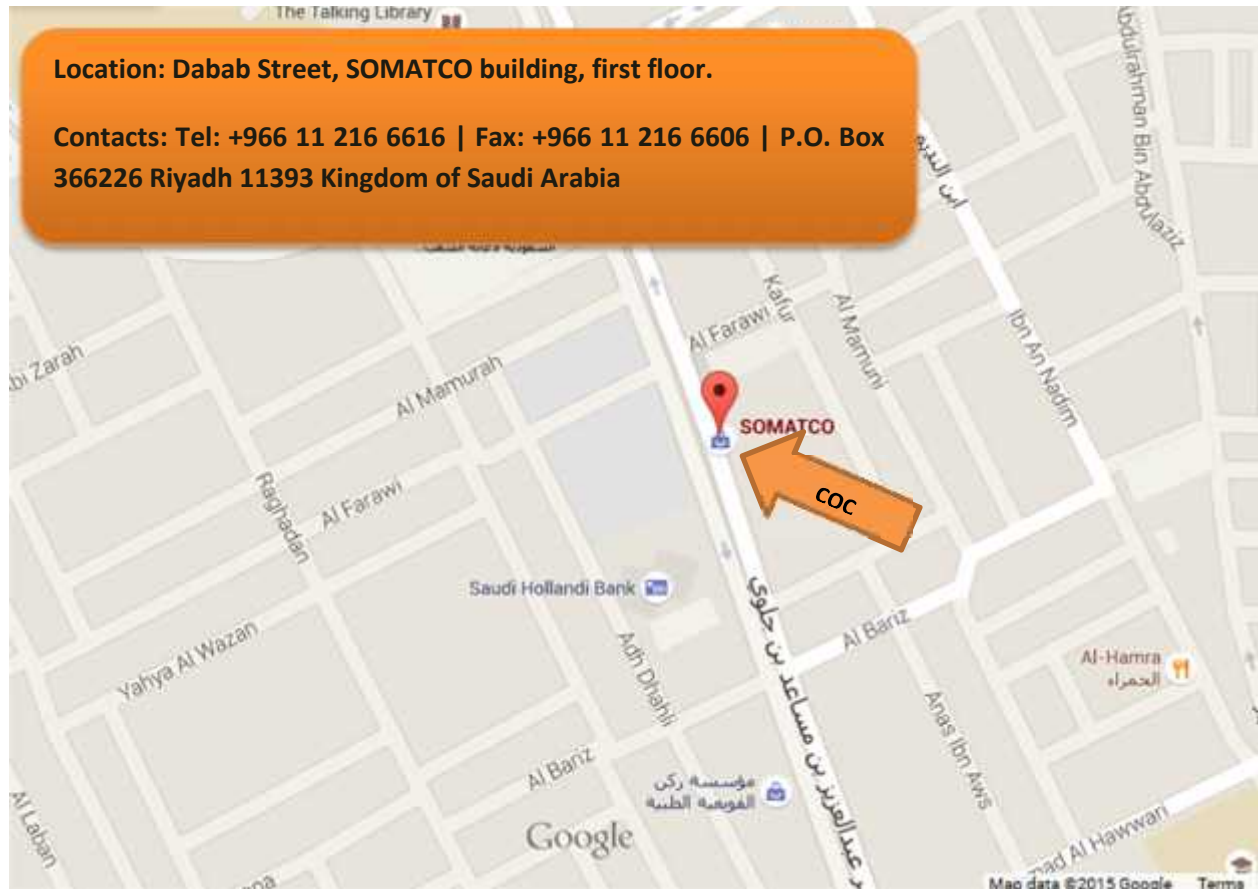
The scope of work is to control & monitor multiple existing sites in Najran, through centralized SCADA wonderware station. Wonderware System platform is implemented with server-client licenses with Maintenance software module and ream reporting, with GPS server and platform for time synchronization. We have used InTouch SCADA for graphics development.

On the control level we have used Siemens S7-300 used for controlling & monitoring five sites, ours cope also included the supply of industrial flow, level, & pressure sensors.





Contact information:



General Manager:

Ayman Abu Jajeh

Email: ayman.abujajeh@contolorbits.com

Mobile: +966551912710

Sales Manager:

Maen A. Kaddoumi

Email: maen@contolorbits.com

Mobile: +966541325573



Administrative documents/ GOVERNMENT CERTIFICATIONS.



Unified Membership No. : 101000304877

رقم العضوية الموحد : ١٠١٠٠٠٣٠٤٨٧٧

Date of Issue : 07/06/2015

تاريخ الأصدار: ٢٠١٥/٠٦/٠٧

Classification : Second

الدرجة: الثانية

Riyadh Chamber of Commerce and Industry certifies that:

تشهد الغرفة التجارية الصناعية بالرياض بأن :

شركة مدارات التحكم المحدودة

Commercial Register No 1010433595

المقيدة بالسجل التجاري / الترخيص رقم ١٠١٠٤٣٣٥٩٥

Registered for this year.

مشتركة لديها لهذا العام .

The Certificate expires on 19/04/2017

وينتهي سريان هذه الشهادة في ٢٠١٧/٠٤/١٩م

فكس: 2166606

هاتف: 2166616

الرمز: 11444

ص.ب: 15410

مدير عام الاشتراكات

ختم الغرفة



اي كسظ او تعديل في هذه الشهادة يلغيها

رمز المستخدم: Thiqah

تصفح موقع بنك المعلومات الاقتصادية <http://databank.org.sa>



Administrative documents/ GOVERNMENT CERTIFICATIONS.

وزارة التجارة والصناعة
Ministry of Commerce and Industry

شهادة تسجيل شركة

الرقم: ١٠١٠٤٣٣٥٩٥
التاريخ: ١٤٣٦\٠٧\٢٢
٧٠٠٣٠٣٢٧٦٥

الاسم التجاري للشركة: شركة مدارات التحكم المحدودة
نوعها: ذات مسئولية محدودة

جنسيتها: سعودية

مدة الشركة: ٩٩ سنة
مركزها الرئيسي: الرياض - شارع الضباب - مقابل مدينة الملك فهد الطبية

ص.ب: ١٥٤١٠ الرمز البريدي: ١١٤٤٤ هاتف: ٢١٦٦٦٦٦ فاكس: ٢١٦٦٦٠٦

النشاط: ستيراد وتصدير وتركيب وصيانة أنظمة التحكم والمراقبة والاتصالات واعمال لوحات التحكم والكهرباء - واستيراد المواد الكهربائية والإلكترونية

رأس المال: ٧٥٠٠٠,٠٠٠ ريال سعودي

المديرون:

- ١- سعود محمد زويد العريفي
- ٢-
- ٤-
- ٥-
- ٧-
- ٩-
- ١١-

سلطات المدير / المديرون حسب ما نص عليه عقد الشركة

يشهد مكتب السجل التجاري بمدينة الرياض في ١٤٣٨\٠٧\٢٢ بموجب الإصدار رقم: ٣٦١٢٢٣٩٠ وتاريخ: ١٤٣٦\٠٧\٢٢ في الرياض
ولتنتهي صلاحية الشهادة في ١٤٣٨\٠٧\٢٢

مدير السجل التجاري للشركات، التوقيع: وليد عبد العزيز

شاهدي محمد العريفي



Control Orbits Co. provides total solution from design, installation, testing, commissioning to maintenance and operation of full spectrum of building services works, including: HVAC Control Systems, Building Energy Management Systems, Integration Systems, Metering Solutions, Security Systems, Lighting Controls Service & Maintenance. We offer a wide range of intelligent and green building solutions including:

✓ **Automation & control solutions**

HVAC and Building Management Systems
Industrial Control and Automation
Hotel Guestroom Management
Lighting Control systems
Home Automation
INTEGRATION
Machine Automation

✓ **Life Safety, and Integrated Security**

Video Surveillance
Access Control and Security Management
Fire & Life Safety
Integrated Security
Perimeter Detection
Automated Gates/ Turnstiles
Public Address & Voice Alarm

✓ **Trading**

HVAC Field Devices
Stand-alone controllers
VFD's & Soft Starters
Industrial Instruments
LV controls materials
PLC's & HMI's
Drives & motors



Tel: +966 11 216 6616 | Fax: +966 11 216 6606 | Mobile: +966551912710 |

P.O. Box 366226 Riyadh 11393 KSA | www.controlorbits.com

ayman.abujajeh@contolorbits.com